



**Staatliche Museen zu Berlin**  
Preußischer Kulturbesitz

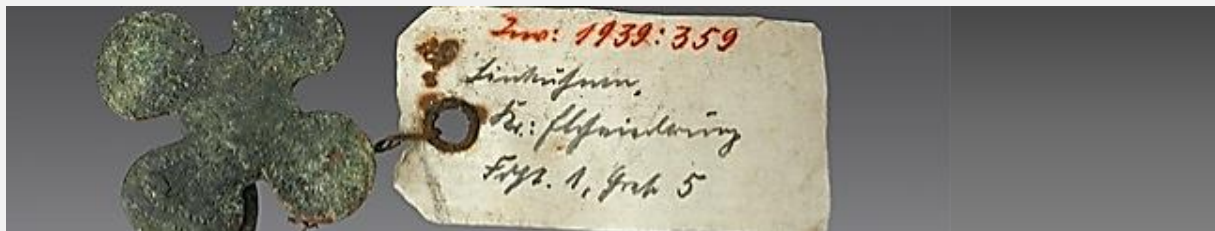
## Research Newsletter

#1/2018

Dear Reader,

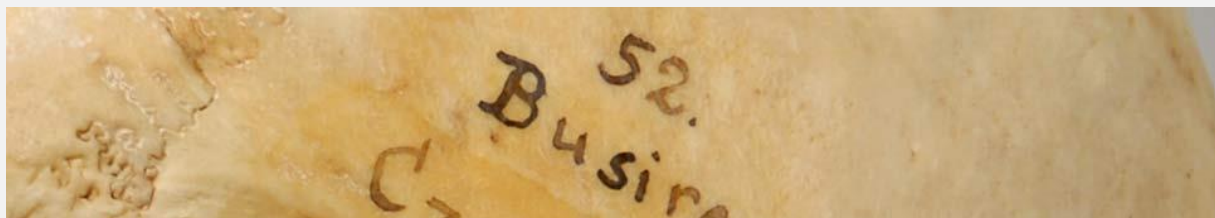
In this issue of our Research-Newsletter we would like to introduce new projects dedicated to provenance research and the reconstruction, rescue, historical analysis of museum collections. In the second part we present exhibitions in cooperation with research partners, recent books and conferences.

## PROJECTS



### **The Museum für Vor- und Frühgeschichte reconstructs the holdings of the Prussia-Collection**

International cooperation and scholarly collaboration with the project partners in Russia, as well as in Poland and Lithuania form essential components of this project. It aims to bring together, at least virtually, the unparalleled holdings of the Prussia Collection, now divided between Berlin and the Russian city of Kaliningrad. [Read more](#)



### **Investigation into the origin of a historical anthropological collection**

In October 2017 began a two-year project which investigates the exact origins of a historical collection of human skulls. The collection was compiled around 1900 in the former colony of

German East Africa by Felix von Luschan. The project is funded by the Gerda Henkel Stiftung. [Read more](#)



### **Qubbet el-Hawa North. Joint rescue excavation project by the Ägyptisches Museum und Papyrussammlung Berlin and the Aswan Inspectorate**

The project's main purpose is the archaeological documentation and conservation of the newly discovered necropolis on the west bank of the Nile at Aswan. The necropolis was discovered by workers during the enlargement of the Nubian village. Since 2017 the mission is financed as a long-term project by the DFG. [Read more](#)



### **The Visitors of the Alte and Neue Museum in Berlin 1830-1880**

This project is dedicated to historical visitor-research of the first two Museums built in 19<sup>th</sup> century Berlin, the Alte (1822-1830) and the Neue Museum (1841-1859). The aim is to identify the visitors of the two first Art Museums in Berlin in their original museum layout. [Read more.](#)

## **EXHIBITIONS IN COOPERATION WITH RESEARCH-PARTNERS**



### **Exchanging Gazes. Between China and Europe 1669–1907**

A special exhibition of the Kunstbibliothek – Staatliche Museen zu Berlin in cooperation with the Max Planck Research Group 'Objects in the Contact Zone: The Cross-Cultural Lives of Things' at the Kunsthistorisches Institut in Florence – Max Planck Institute. [Read more](#)



### **Form Follows Flower. Moritz Meurer, Karl Blossfeldt & Co.**

This exhibition at the Kunstgewerbemuseum has been organized in cooperation with the Cluster of Excellence 'Bild Wissen Gestaltung' at the Humboldt-Universität zu Berlin and the Universität der Künste Berlin. [Read more](#)



### **Unboxing Photographs. Working in the Photo Archive**

This exhibition shows the results of a joint research project of the Staatliche Museen zu Berlin 'Photo Objects – Photographs as Objects (of Research) in Archaeology, Ethnology and Art History'. [Read more](#)

## **CONFERENCES AND WORKSHOPS**



### **PREP Meeting of American and German Experts**

PREP stands for German-American Provenance Research Exchange Program for Museum Professionals. The program is geared towards museum professionals from Germany and the United States involved in provenance research, particularly as it applies to art theft and looting during the National Socialist era. In autumn 2017 German and American Experts met in Berlin to discuss their work. [Read more](#)





### **Challenges and Desiderata: Provenance Research on East Asian Art**

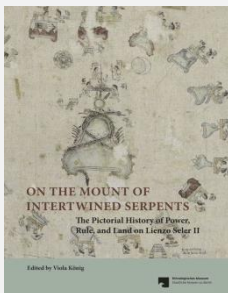
In the joint workshop ‘Challenges and Desiderata: Provenance Research on East Asian Art’ by the Institute for Cultural Studies and Urban Historical Studies at the Technische Universität Berlin and by the Museum für Asiatische Kunst at the Staatliche Museen zu Berlin, researchers and curators came together to discuss and assess the current state of provenance research. [Read more.](#)



### **Adorned with Feathers. International Workshop on South American Featherwork as Mirrors of entangled Relationships**

Archaeologists, ethnologists, historians and art historians, ornithologists and conservators were invited to discuss the analysis of the Feather-Objects of the Ethnological Museum.

## **BOOKS IN THE CONTEXT OF RESEARCH PROJECTS**



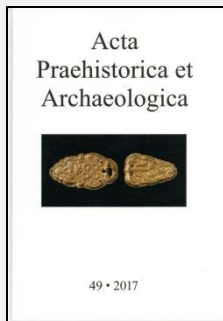
**On the Mount of the Intertwined Serpents.** The Pictorial History of Power, Rule, and Land on Lienzo Seler II.  
Ed. by Viola König.

[Read more](#)



**Modegruppen und Textilzirkel in der DDR.** Die Sammlung im MEK- Ed. by Sarah Wassermann  
Reihe: Schriftenreihe Museum Europäischer Kulturen, Bd. 21

[Read more](#)



### **Acta Praehistorica et Archaeologica, Bd. 49/2017**

Ed. by Matthias Wemhoff

Reihe: Reihe des Museums für Vor- und Frühgeschichte

Beiträge über "Das Schicksal ausgewählter Bildsteine aus der Dordogne", "Fuchsschwanzketten und Idolanhänger", Berichte aus der Museumsarbeit und zu den Forschungsprojekten des Museums. [Read more](#)

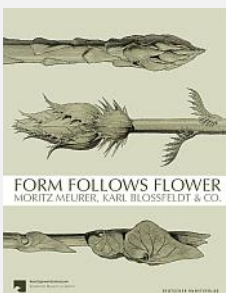


### **Dokumentation des Fremdbesitzes: Antikensammlung**

Antiken aus Carinhall aus dem Eigentum der Bundesrepublik Deutschland

Reihe: Dokumentation des Fremdbesitzes, Bd. III

[Read more](#)



### **Form Follows Flower. Moritz Meurer, Karl Blossfeldt & Co.**

Ed. by Angela Nikolai; Sabine Thümmler.

[Read more](#)



### **Praying for Myriad Virtues**

Ching-Ling Wang: On Ding Guanpeng's the Buddha Preaching in the Berlin Collection

Reihe: Connecting Art Histories in the Museum (CAHIM), Vol. 3

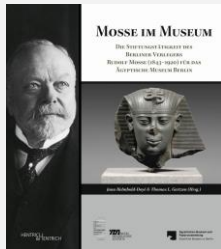
[Read more](#)



### **Exchanging Gazes. Between China and Europe 1669–1907**

Ed. by Matthias Weiß; Eva-Maria Troelenberg; Joachim Brand

[Read more:](#)



## **Mosse im Museum**

Die Stiftungstätigkeit des Berliner Verlegers Rudolf Mosse (1843-1920) für das Ägyptische Museum Berlin  
Ed. Jana Helmbold-Doyé; Thomas L. Gertzen

[Read more](#)

We are looking forward to hearing from you!

For more information we recommend our [Website](#) or [Facebook](#).  
We also recommend our blog [Museum and the City](#).

Please contact us via [forschung@smb.spk-berlin.de](mailto:forschung@smb.spk-berlin.de) if you want to receive the newsletter in future.

To unsubscribe the newsletter please reply to this email.

Generaldirektion  
Referat Forschung, Ausstellungen und Projekte  
Stauffenbergstr. 41  
10785 Berlin

[forschung@smb.spk-berlin.de](mailto:forschung@smb.spk-berlin.de)