

# DECADENCE AND DARK DREAMS

## Belgian Symbolism

16.09.2020  
Seite 1 / 4

The works are reproduced completely and without bleed. The reproduction is firmly integrated and does not run over the gutter. No text may run over the image.

Reproduction free of charge is only permitted within the scope of reporting on the exhibition if the complete credit line is mentioned. In the event of any other use, you are obliged to obtain the copyright from the Nolde Stiftung Seebüll independently. If you wish to reproduce an image, please send us a specimen copy: Freunde der Nationalgalerie, Verena Mühlegger, Potsdamer Str. 58, 10785 Berlin.

PRESS CONTACT  
EXHIBITION  
Dr. Katharina von Chlebowski  
Rudi Schmid  
TEL: +49 30 26 39 488 0  
FAX: +49 30 26 39 488 11  
presse@freunde-der-nationalgalerie.de  
www.freunde-der-nationalgalerie.de

PRESS CONTACT  
STAATLICHE MUSEEN ZU BERLIN  
Directorate General  
Stauffenbergstraße 41  
10785 Berlin

Mechtild Kronenberg  
Press, Communications, Sponsorship  
TEL: +49 30 266 42 34 01  
FAX: +49 30 266 42 34 09  
presse@smb.spk-berlin.de  
www.smb.museum/presse

Fiona Geuss  
Nationalgalerie Press Officer  
TEL: +49 30 39 78 34 17  
FAX: +49 30 39 78 34 13  
presse@smb.spk-berlin.de  
www.smb.museum/presse

### PRESS IMAGES

The press image are available for download in high resolution in the press section of the websites [www.belgischersybmolismusinberlin.de](http://www.belgischersybmolismusinberlin.de) and [www.smb.museum](http://www.smb.museum).

**Conditions: The works are reproduced completely and without bleed. The reproduction is firmly integrated and does not run over the gutter. No text may run over the image.**



←  
Fernand Khnopff  
**Caresses**, 1896  
Oil on canvas, 50 x 150 cm  
© Musées royaux des Beaux-Arts de Belgique, Brüssel



←  
Fernand Khnopff  
**I lock my door upon myself**, 1891  
Oil on canvas, 72,7 x 141,0 cm  
© bpk | Bayerische Staatsgemäldesammlungen



←  
Fernand Khnopff  
**Portrait of Marguerite Khnopff**, 1887  
Oil on canvas, 96 x 74,5 cm, Musées royaux des Beaux-Arts de Belgique, Brüssel  
© RMFAB, Brussels, Foto: Freya Maes

16.09.2020  
Seite 2 / 4

The works are reproduced completely and without bleed. The reproduction is firmly integrated and does not run over the gutter. No text may run over the image.

Reproduction free of charge is only permitted within the scope of reporting on the exhibition if the complete credit line is mentioned. In the event of any other use, you are obliged to obtain the copyright from the Nolde Stiftung Seebüll independently. If you wish to reproduce an image, please send us a specimen copy: Freunde der Nationalgalerie, Verena Mühlegger, Potsdamer Str. 58, 10785 Berlin.

PRESS CONTACT  
EXHIBITION

Dr. Katharina von Chlebowski  
Rudi Schmid

TEL: +49 30 26 39 488 0

FAX: +49 30 26 39 488 11

presse@freunde-der-nationalgalerie.de

www.freunde-der-nationalgalerie.de

PRESS CONTACT  
STAATLICHE MUSEEN ZU BERLIN  
Directorate General  
Stauffenbergstraße 41  
10785 Berlin

Mechtild Kronenberg  
Press, Communications, Sponsorship

TEL: +49 30 266 42 34 01

FAX: +49 30 266 42 34 09

presse@smb.spk-berlin.de

www.smb.museum/presse

Fiona Geuss  
Nationalgalerie Press Officer

TEL: +49 30 39 78 34 17

FAX: +49 30 39 78 34 13

presse@smb.spk-berlin.de

www.smb.museum/presse



←

Jean Delville

**The Love of Souls**, 1900

Oil and tempera on canvas, 238 x 150 cm

© Musée d'Ixelles – Brüssel, Photo: Vincent Everarts



←

Jean Delville

**Portrait of Mrs. Stuart Merrill. Mysteriosa**

Chalk, pastel and coloured pencil on paper, 40 x 32,1 cm, Musées royaux des Beaux-Arts de Belgique, Brüssel

© RMFAB, Brussels, Foto: J. Geleyns – Art Photography



←

James Ensor

**The Skeleton Painter**, 1896

Oil on panel, 37,3 x 45,3 cm, Koninklijk Museum voor Schone Kunsten, Antwerpen

© Royal Museum of Fine Arts Antwerp, www.lukasweb.be – Art in Flanders, Photo: Hugo Maertens



←

Charles van der Stappen

**The Sphinx**, 1898

Marble, 70,5 x 56 x 34 cm, Musées royaux des Beaux-Arts de Belgique, Brüssel

© RMFAB, Brussels, Foto: J. Geleyns – Art Photography



Nationalgalerie  
Staatliche Museen zu Berlin

16.09.2020  
Seite 3 / 4

The works are reproduced completely and without bleed. The reproduction is firmly integrated and does not run over the gutter. No text may run over the image.

Reproduction free of charge is only permitted within the scope of reporting on the exhibition if the complete credit line is mentioned. In the event of any other use, you are obliged to obtain the copyright from the Nolde Stiftung Seebüll independently. If you wish to reproduce an image, please send us a specimen copy: Freunde der Nationalgalerie, Verena Mühlegger, Potsdamer Str. 58, 10785 Berlin.

PRESS CONTACT  
EXHIBITION

Dr. Katharina von Chlebowski  
Rudi Schmid

TEL: +49 30 26 39 488 0

FAX: +49 30 26 39 488 11

presse@freunde-der-nationalgalerie.de

www.freunde-der-nationalgalerie.de

PRESS CONTACT

STAATLICHE MUSEEN ZU BERLIN

Directorate General  
Stauffenbergstraße 41  
10785 Berlin

Mechtild Kronenberg

Press, Communications, Sponsorship

TEL: +49 30 266 42 34 01

FAX: +49 30 266 42 34 09

presse@smb.spk-berlin.de

www.smb.museum/presse

Fiona Geuss

Nationalgalerie Press Officer

TEL: +49 30 39 78 34 17

FAX: +49 30 39 78 34 13

presse@smb.spk-berlin.de

www.smb.museum/presse



←

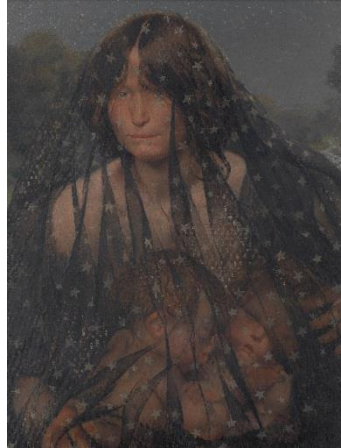
George Minne

**Fountain with Kneeling Youths**, c.1898

plaster, overall height 169.5 cm, plinth 90 cm,  
diameter 240 cm, figures each 79.5 x 19 x 43.5

cm, Museum voor Schone Kunsten, Gent

© Museum of Fine Arts Ghent, www.lukasweb.be –  
Art in Flanders, Photo: Hugo Maertens



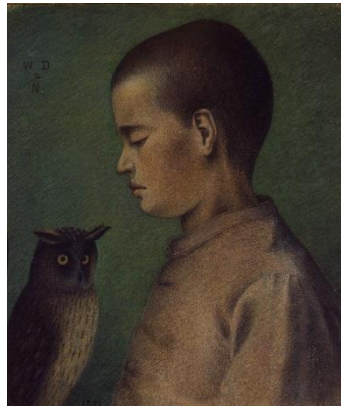
←

Léon Frédéric

**Allegory of Night**, 1891

Oil on canvas, 70 x 54,5 cm, Museum voor Schone  
Kunsten, Gent

© Museum of Fine Arts Ghent, www.lukasweb.be –  
Art in Flanders, Photo: Hugo Maertens



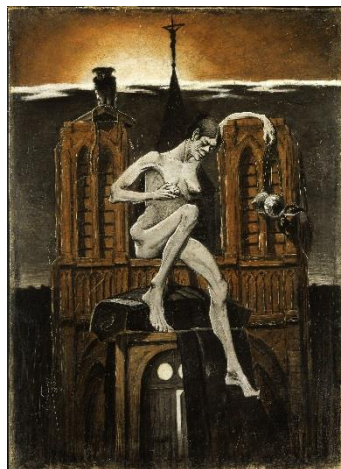
←

William Degouve de Nuncques

**Child with Owl**, 1892

pastel on paper mounted on canvas, 41 x 35 cm,  
Privatsammlung, Antwerpen

© private collection, courtesy Van Herck –  
Eykelberg, Antwerp



←

Eugène Laermans

**The Flowers of Evil**, 1891

Oil on canvas, 81 x 58 cm

Private collection, Genf



Nationalgalerie  
Staatliche Museen zu Berlin

16.09.2020  
Seite 4 / 4

The works are reproduced completely and without bleed. The reproduction is firmly integrated and does not run over the gutter. No text may run over the image.

Reproduction free of charge is only permitted within the scope of reporting on the exhibition if the complete credit line is mentioned. In the event of any other use, you are obliged to obtain the copyright from the Nolde Stiftung Seebüll independently. If you wish to reproduce an image, please send us a specimen copy: Freunde der Nationalgalerie, Verena Mühlegger, Potsdamer Str. 58, 10785 Berlin.

PRESS CONTACT  
EXHIBITION

Dr. Katharina von Chlebowski  
Rudi Schmid

TEL: +49 30 26 39 488 0

FAX: +49 30 26 39 488 11

presse@freunde-der-nationalgalerie.de

www.freunde-der-nationalgalerie.de

PRESS CONTACT  
STAATLICHE MUSEEN ZU BERLIN

Directorate General  
Stauffenbergstraße 41  
10785 Berlin

Mechtild Kronenberg  
Press, Communications, Sponsorship

TEL: +49 30 266 42 34 01

FAX: +49 30 266 42 34 09

presse@smb.spk-berlin.de

www.smb.museum/presse

Fiona Geuss  
Nationalgalerie Press Officer

TEL: +49 30 39 78 34 17

FAX: +49 30 39 78 34 13

presse@smb.spk-berlin.de

www.smb.museum/presse



←

Franz von Stuck  
**The Sin**, um 1912

Oil on canvas, 88 x 52,5 cm, Staatliche Museen zu Berlin, Nationalgalerie

© Staatliche Museen zu Berlin, Nationalgalerie /  
Leihgabe der Bundesrepublik Deutschland, Photo:  
Andres Kilger



←

Arnold Böcklin  
**Isle of the Dead**, 1883

Oil on panel, 80 x 150 cm, Staatliche Museen zu Berlin, Nationalgalerie

© Staatliche Museen zu Berlin, Nationalgalerie,  
Photo: Andres Kilger