



Staatliche Museen zu Berlin
Preußischer Kulturbesitz

MUSEUMSINSEL BERLIN

BUILDINGS
AND COLLECTIONS



**ALTES
MUSEUM**

**NEUES
MUSEUM**

**ALTE
NATIONALGALERIE**

**BODE
MUSEUM**

**PERGAMON
MUSEUM**

**PERGAMON
MUSEUM**

DAS PANORAMA

**JAMES SIMON
GALERIE**

MUSEUMSINSEL BERLIN

Museumsinsel Berlin (Museum Island) is one of the most important and most beautiful museum ensembles in the world. Its buildings represent 100 years of museum architecture housing the Staatliche Museen zu Berlin's unique art collections. The encyclopaedic spectrum of works spans from the Stone Age and early history, through the ancient world, to the 19th century. In 1999 Museumsinsel Berlin was added to the list of UNESCO World Heritage.



ALTES MUSEUM

Karl Friedrich Schinkel's Altes Museum [Old Museum], which opened in 1830, is the oldest building on Museumsinsel and one of the most important buildings of the Neoclassical era. The wide atrium with 18 Ionic columns is reminiscent of Greek temple architecture. After striding through the atrium, visitors are surprised by the central interior space - a rotunda adorned with ancient statues of gods.

Since 2011 the Altes Museum has been dedicated exclusively to classical antiquity. Its main floor provides an impressive panorama of the art of ancient Greece from the 10th to 1st century BC. The chronologically arranged exhibition comprises stone sculptures, vases, jewellery and ancient coins in a richly diverse display structured around certain core themes. Highlights include the statue of the "Berlin Goddess", the "Praying Boy" and the Cup of the potter Sosias. The art and culture of the Etruscans and the Roman Imperial Period is on display on the upper level.

Entrance: Am Lustgarten

Tue - Sun 10 am - 6 am

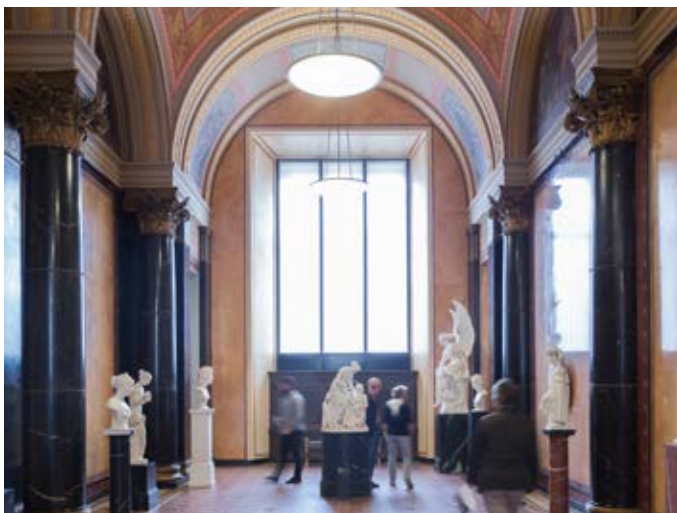


NEUES MUSEUM

Built between 1843 and 1855 from plans by Friedrich August Stüler, the Neues Museum [New Museum] suffered severe damage during the Second World War. In 2003 restoration by David Chipperfield Architects began. The building's facade and interiors were preserved without erasing the traces of past damage.

The museum reopened its doors to the public in 2009. It combines geographically and thematically related exhibits pooled together from different collections. The display dedicated to Ancient Egypt charts the development of ancient Egyptian and Nubian cultures over a period of four millennia. Exhibits include depictions of the royal dynasties, burial chambers and the world-famous Bust of Nefertiti. Another part of the exhibition comprises 6,000 archaeological finds reflecting the cultural history of Europe and parts of Asia from the Stone Age to the Middle Ages. One of the highlights is the mysterious "Berlin Golden Hat" from the Bronze Age.

Entrance: Bodestraße
(via Kolonnadenhof or James-Simon-Galerie)
Tue – Sun 10 am – 6 pm, Thurs to 8 pm



ALTE NATIONALGALERIE

The Alte Nationalgalerie (Old National Gallery) is the original home of the Nationalgalerie, whose collections are now shown in various museums in Berlin. The Nationalgalerie opened in 1876, the third museum located on the island on the river Spree. It reopened in its present form in 2001, following reconstruction and modernization.

The Alte Nationalgalerie is a window on the art of the 19th century, ranging from works of the early Neoclassical and Romantic periods to those of the French Impressionists. Visitors can admire famous works by Karl Friedrich Schinkel, Caspar David Friedrich, Arnold Böcklin, Max Liebermann, Édouard Manet and Auguste Renoir. The museum also houses the world's largest collection of paintings by Adolph Menzel. A selection of sculptures, including the "Princess Group" by Johann Gottfried Schadow, and other works by Christian Daniel Rauch, Berthel Thorvaldsen, Antonio Canova and Rudolph Schadow are on view in the sculpture hall.

Entrance: Bodestraße (via Kolonnadenhof)

Tue – Sun 10 am – 6 am



BODE MUSEUM

The Kaiser-Friedrich-Museum (later the Bode-Museum) was built at the northern end of Museumsinsel between 1897 and 1904. In 1956 it was renamed after its intellectual founder, museum director Wilhelm von Bode. In 2009 the Bode-Museum reopened and now houses diverse collections in one building.

The Sculpture Collection is one of the largest of its kind in the world. Including works by Tilman Riemenschneider, Donatello and Antonio Canova, it spans from the early Middle Ages to the late 18th century. Numerous paintings from the Gemäldegalerie (Old Master Paintings), which is located in the Kulturforum near Potsdamer Platz, enrich the presentation of sculptures. Other sections of the display are devoted to late antiquity and Byzantine Art as well as the Münzkabinett (Numismatic Collection). Until the end of November 2019, the exhibition “Beyond Compare. Art from Africa in the Bode-Museum” juxtaposes masterpieces from the Ethnologisches Museum (Ethnological Museum) with European artworks.

Entrance: Monbijoubrücke
Tue – Sun 10 am – 6 am



PERGAMON MUSEUM

The Pergamonmuseum was designed by Alfred Messel and opened in 1930 as the fifth and last museum building on Museumsinsel. It houses objects from the Antikensammlung [Collection of Classical Antiquities], the Vorderasiatisches Museum [Museum of the Ancient Near East] and the Museum für Islamische Kunst [Museum of Islamic Art]. It is world-famous for the impressive reconstructions of ancient buildings such as the Pergamon Altar, the Ishtar Gate of Babylon, and the Mschatta Facade.

The Pergamonmuseum has been undergoing sectional renovations since 2013 and closed completely to visitors in October 2023. This step is necessary so that the building's major refurbishment as part of the "Museumsinsel Master Plan" can continue as intended. The hall with the Pergamon Altar and the North Wing of the museum with the newly installed Museum für Islamische Kunst are expected to reopen in spring 2027.

closed for refurbishment



PERGAMON MUSEUM DAS PANORAMA

The Antikensammlung [Collection of Classical Antiquities] of the Staatliche Museen zu Berlin and artist Yadegar Asisi are presenting a spectacular exhibition on the ancient city of Pergamon in the new exhibition building. Alongside 80 original works of art, a gigantic 30-metre-high, 360° panorama shows the hustle and bustle of the ancient city in 129 AD. On the terraces of the Acropolis, temples, theatres and the world-famous Pergamon Altar merge into a mountainous landscape.

The exhibition features original sculptures from Pergamon - including the largest part of the Telephos Frieze from the Pergamon Altar, portraits of the kings, the dancer from the palace and the large female statues from the altar terrace - highlighting these works in a dramatic presentation. The famous Gigantomachy Frieze, which must remain in the closed Altar hall during the renovation of the Pergamonmuseum, is also visualized using cutting-edge digital technology.

Entrance: Am Kupfergraben 2

Tue-Sun 10 am-6 am



JAMES SIMON GALERIE

The James-Simon-Galerie is the new entrance building and visitor centre on Museumsinsel. It is named after James Simon [1851-1932], who was one of the most important patrons of the Staatliche Museen zu Berlin. The building is a component of the Master Plan for Museumsinsel, which was adopted in 1999 to preserve the UNESCO World Heritage while allowing it to be transformed into a contemporary museum complex at the same time. David Chipperfield Architects created the design for the new building.

The James-Simon-Galerie is assuming a central role in its function as a visitor centre. In addition to tickets and information for all of the museum buildings, it offers visitors a café, museum shop, lecture hall, and a space for special exhibitions. Moreover, the building provides direct access to the Pergamon-museum and is one of two accessways to the Neues Museum through an underground walkway known as the “Archaeological Promenade”.

Entrance: Bodestraße

Mon-Sun 9:30 am-6:30 pm, Thurs to 8 pm

The terrace and café are also accessible outside opening hours

MUSEUMSINSEL BERLIN

Admission

Avoid queuing in all museums and exhibitions: discounted tickets and all admission prices are available online:

www.smb.museum/tickets

Free admission for children and young adults under 18.

Audio guides in diverse languages are included in the ticket price.

Public Transportation

S/U-Bahn

U-Bhf. Museumsinsel	U5
S-Bhf. Hackescher Markt	S3, S5, S7, S9
S/U-Bhf. Friedrichstraße	S1, S2, S25, S26, U6

Tram

Hackescher Markt	M1, M4, M5, M6
Am Kupfergraben	M1, 12

Bus

Staatsoper	TXL
Lustgarten	100, 200
Friedrichstraße	147

Information and Booking

Mon - Fri 9 am - 4 pm

Tel. +49 30 - 266 42 42 42

Fax +49 30 - 266 42 22 90

service@smb.museum

We request that you kindly give prior notice for group tours and tours by external operators.

Listings of our own tours and events available at:

www.smb.museum/veranstaltungen

Exclusive events outside opening hours

Museum & Location: www.museum-location.de

www.smb.museum

www.museumsinsel-berlin.de

www.facebook.com/staatlichemuseenzuberlin

www.instagram.com/staatlichemuseenzuberlin

Publication date: 10/2023, Subject to change

Photo Credits:

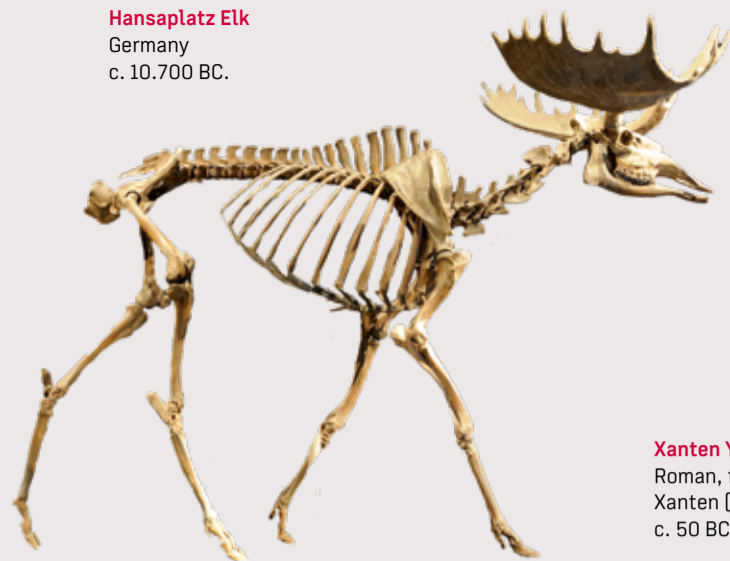
Objects: © Staatliche Museen zu Berlin / Johannes Laurentius, Sandra Steiß, Claudia Plamp, Andres Kilger, Jörg P. Anders, Johannes Kramer, Olaf M. Teßmer, Ingrid Geske, Antje Voigt, Lutz-Jürgen Lübke, Claudia Obrocki, Interior views: © Staatliche Museen zu Berlin / David von Becker, Achim Kleuker © asisi / Foto Tom Schulze

4
Ancient Egypt / Prehistory
and early history
**NEUES
MUSEUM**
also via
James-Simon-Galerie

Berlin Golden Hat
Southern Germany
10th-8th cent. BC



Hansplatz Elk
Germany
c. 10.700 BC.



Xanten Youth
Roman, found near
Xanten (Germany)
c. 50 BC-50 AD



Bust of Nefertiti
Tell-el-Amarna (Egypt)
c. 1351-1334 BC



5
Art of the 19th century
**ALTE
NATIONAL
GALERIE**

Johann Gottfried
Schadow:
Princess Group
Germany
1795-1797



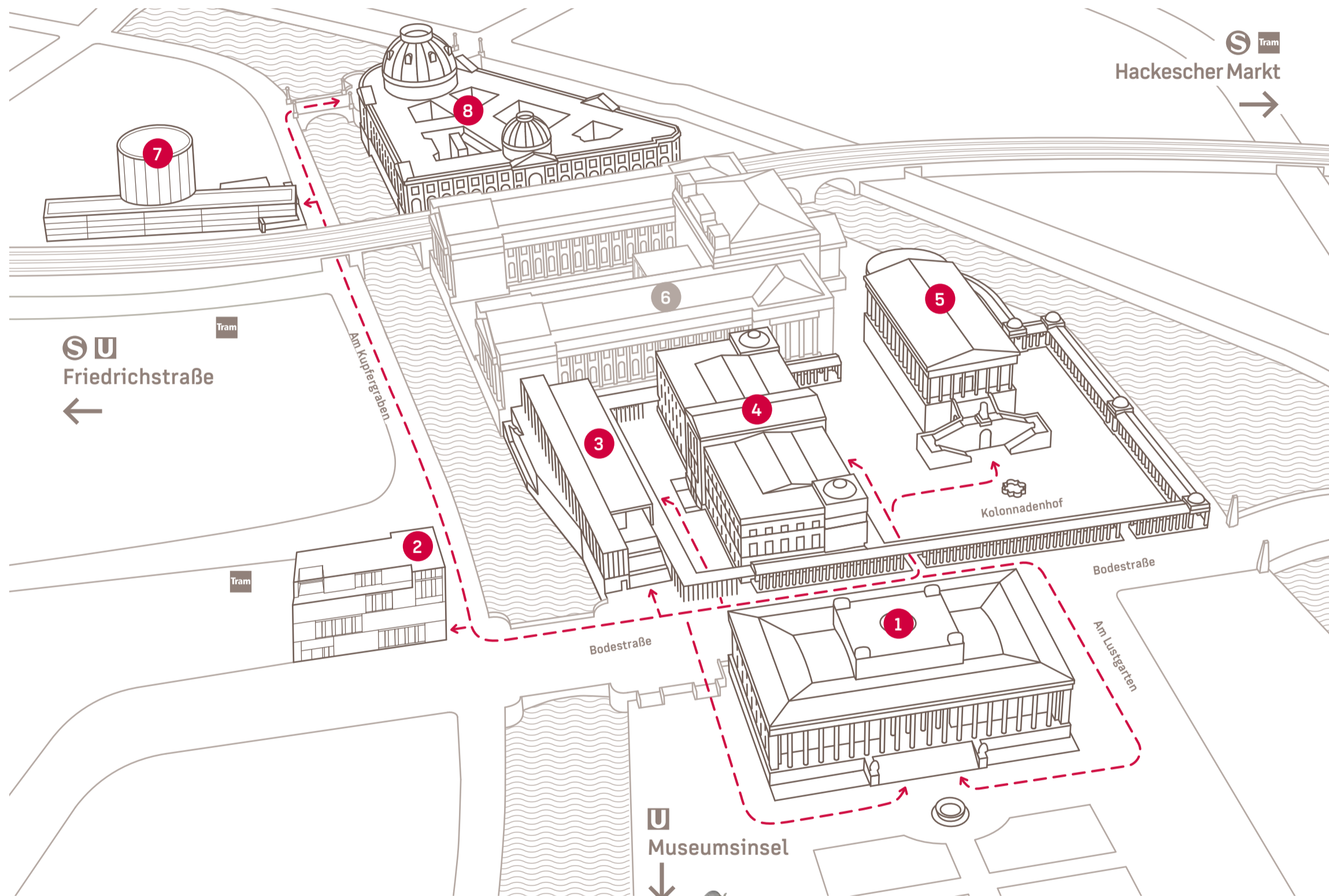
Edouard Manet:
In the Conservatory
France
1878-1879



Caspar David
Friedrich:
Monk by
the Sea
Germany
1808-1810

3
Entrance and service building
**JAMES SIMON
GALERIE**

2
Centre for Cultural Education
**HAUS
BASTIAN**
opens in late August 2019



6
closed for refurbishment
**PERGAMON
MUSEUM**

Pergamon Altar
c. 170 - 160 BC
Pergamon (Turkey)

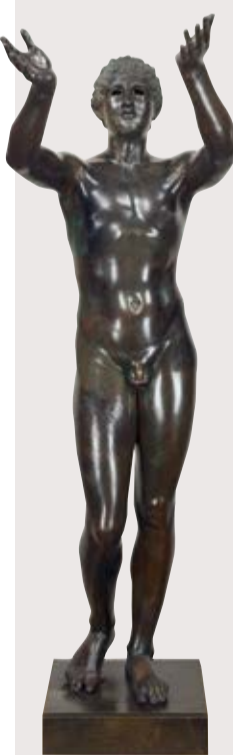


1
Greeks, Etruscans, Romans
**ALTES
MUSEUM**

Berlin Goddess
Southern Attica
(Greece)
c. 570 BC



Praying Boy
Rhodes (Greece)
c. 300 BC



Portraits of Cleopatra
and Caesar
Rome (Italy)
50-38 BC / 0-50 AD

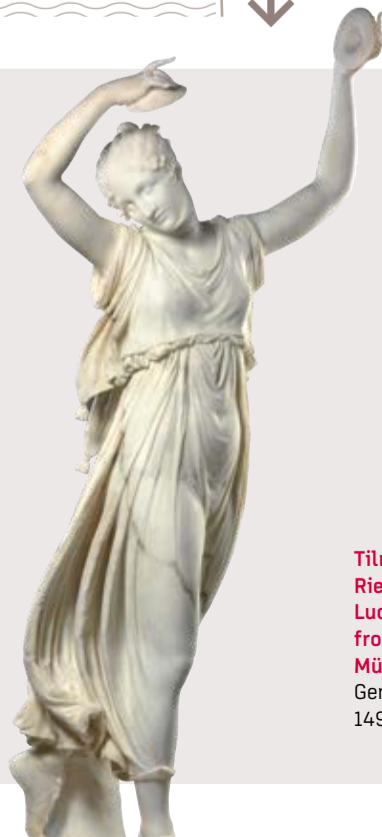


8
Sculpture and painting 13th-18th century
Late-antique and Byzantine art
Coins and medals
**BODE
MUSEUM**

Gold medal with a
portrait of Alexander
the Great
Abukir (Egypt)
1st half of the 3rd cent. AD



Antonio Canova:
Dancer
Rome (Italy)
1809-1812



Tilman
Riemenschneider:
Lucas the Evangelist
from the
Münnerstädter Retable
Germany
1490-1492



Andrea Mantegna:
Madonna with
Sleeping Child
Italy
about 1465-70



7
Ancient Pergamon
**PERGAMON
MUSEUM
DAS
PANORAMA**

Statue of Poseidon
from the Altar's roof
Pergamon (Turkey)
c. 160 BC



Beautiful Head
Pergamon (Turkey)
c. 200-175 BC



Alexandrine
Parakeet Mosaic
Pergamon (Turkey)
160-150 BC