

Information and floor plans

# NEUES MUSEUM

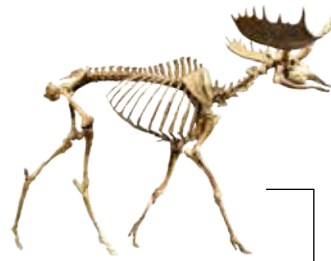
MUSEUMSINSEL BERLIN

## 3

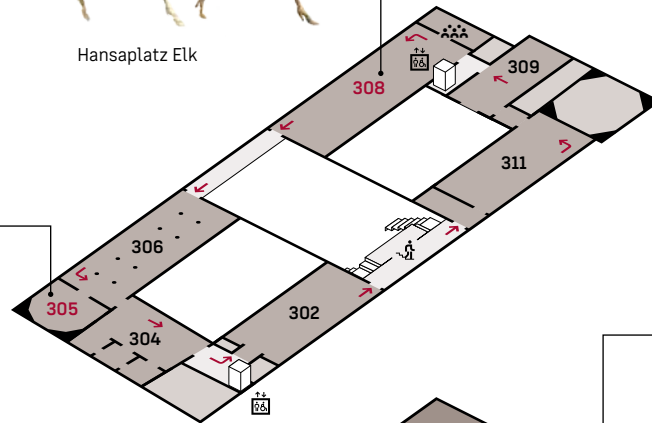
- 311 Historical Collections
- 309 The Archaeology in Berlin
- 308 Stone Age
- 306 Bronze Age
- 305 The Golden Hat
- 304 Time Machine
- 302 Iron Age



The Golden Hat



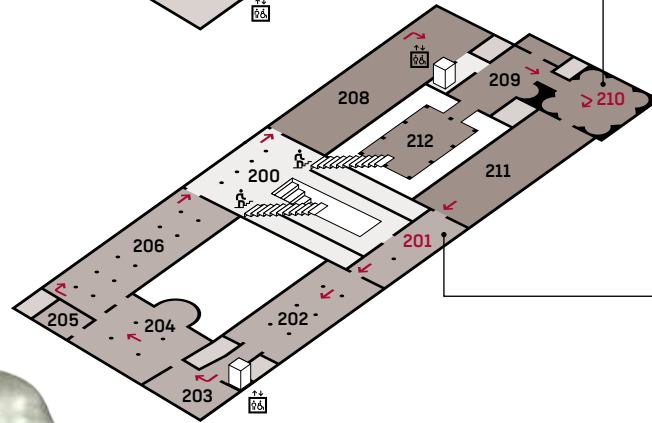
Hansaplatz Elk



Bust of Nefertiti

## 2

- 200 Stairway Hall
- 201 Treasures of the Rhine
- 202 The Roman Provinces
- 203 Roman Gods
- 204 Rome's Northern Neighbours
- 205 Fragmentarium
- 206 Migration Period and Middle Ages
- 208 Sculpture
- 209 Amarna Period
- 210 Nefertiti
- 211 Library of Antiquity
- 212 Under Aten's Rays



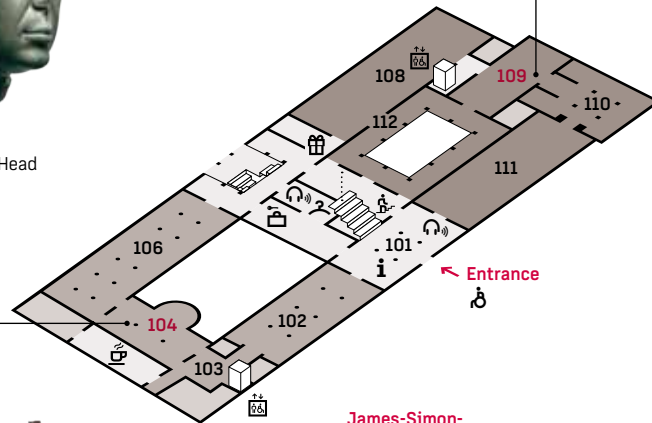
The Xanten Youth

## 1

- 101 Vestibule
- 102 Setting Out for Troy
- 103 Schliemann's Troy
- 104 Schliemann's Troy
- 106 Cyprus, Island of Aphrodite
- 108 Eternal Life
- 109 Thirty Centuries
- 110 Pharaoh
- 111 Prologue
- 112 The Egyptian Temple



Berlin Green Head



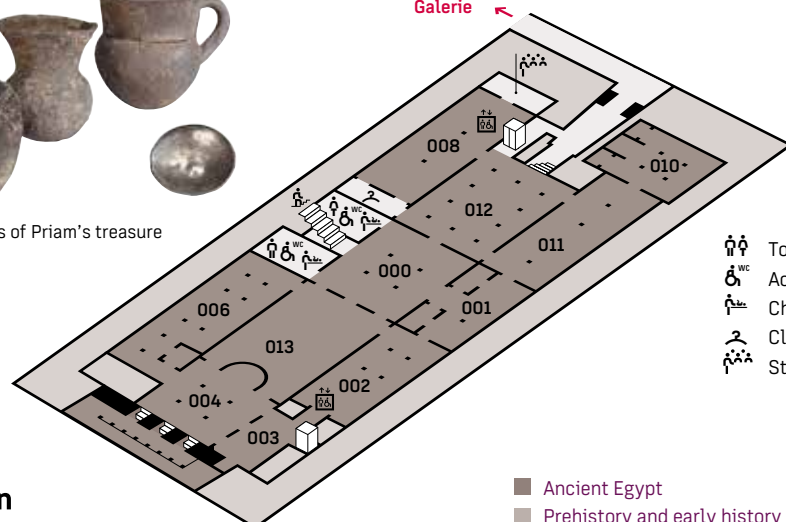
- ➔ Entrance
- i Information
- 🎧 Audioguide
- 🚻 Cloakroom
- 🔒 Lockers
- ♿ Barrier-free access
- 🛍 Shop
- ☕ Café

## 0

- 000 Lower Foyer
- 001 Nile Valley Habitat
- 002 Daily Life
- 003 The Time of the Pyramids
- 004 Temporary Exhibition
- 006 Nubia, Napata and Meroë
- 008 Afterworld
- 010 Afterworld
- 011 Belief Systems
- 012 Egyptian Courtyard  
Journey to the Afterworld
- 013 Greek Courtyard  
World Order



Silver vessels of Priam's treasure



- 🚻 Toilets
- ♿ Accessible toilet
- 🚿 Changing table
- 🚻 Cloakroom [groups]
- 🎨 Studio

- Ancient Egypt
- Prehistory and early history
- A comparative view of ancient cultures



**Staatliche Museen zu Berlin**  
Preußischer Kulturbesitz



### The Neues Museum (New Museum)

The Neues Museum stands as a monument to 19th century art appreciation, museum design and technological innovation. Built between 1843 and 1855 to plans by Friedrich August Stüler, the complex suffered severe damage in the Second World War. Measures were taken in the 1980s to prevent further dilapidation. In 1997, following an international tendering process, the British architect David Chipperfield was commissioned to refurbish the Museum. Work began in 2003. Façade and interiors were preserved without erasing the traces of past damage. The original sheen of the building, listed as a UNESCO World Heritage structure in 1999, has been restored. Since reopening in 2009 the Museum presents spatially and thematically linked exhibits from three separate collections.

### The collections

The Neues Museum displays artefacts from the Ägyptisches Museum und Papyrussammlung [Egyptian Museum and Papyrus Collection], the Museum für Vor- und Frühgeschichte [Museum of Prehistory and Early History] and the Antikensammlung [Collection of Classical Antiquities]. The collections provide insights into the evolution of ancient cultures stretching from the Middle East to the Atlantic and from North Africa to Scandinavia.

The Ägyptisches Museum und Papyrussammlung charts the development of ancient Egyptian and Nubian cultures over a period of four millennia. Exhibits include images of royalty, burial chambers and the world-famous bust of Nefertiti from the Amarna Period. Texts covering a period extending from the ancient Egyptians to Late Antiquity are also on show.

The Museum für Vor- und Frühgeschichte comprises 6,000 archaeological finds reflecting the cultural history of Europe and parts of Asia from the Stone Age to the Middle Ages. Exhibits include the Neanderthal skull from Le Moustier and the mysterious "Berlin Golden Hat" from the Bronze Age.

#### Neues Museum

Staatliche Museen zu Berlin  
Museumsinsel Berlin  
Visitor's entrance: Bodestraße  
10178 Berlin

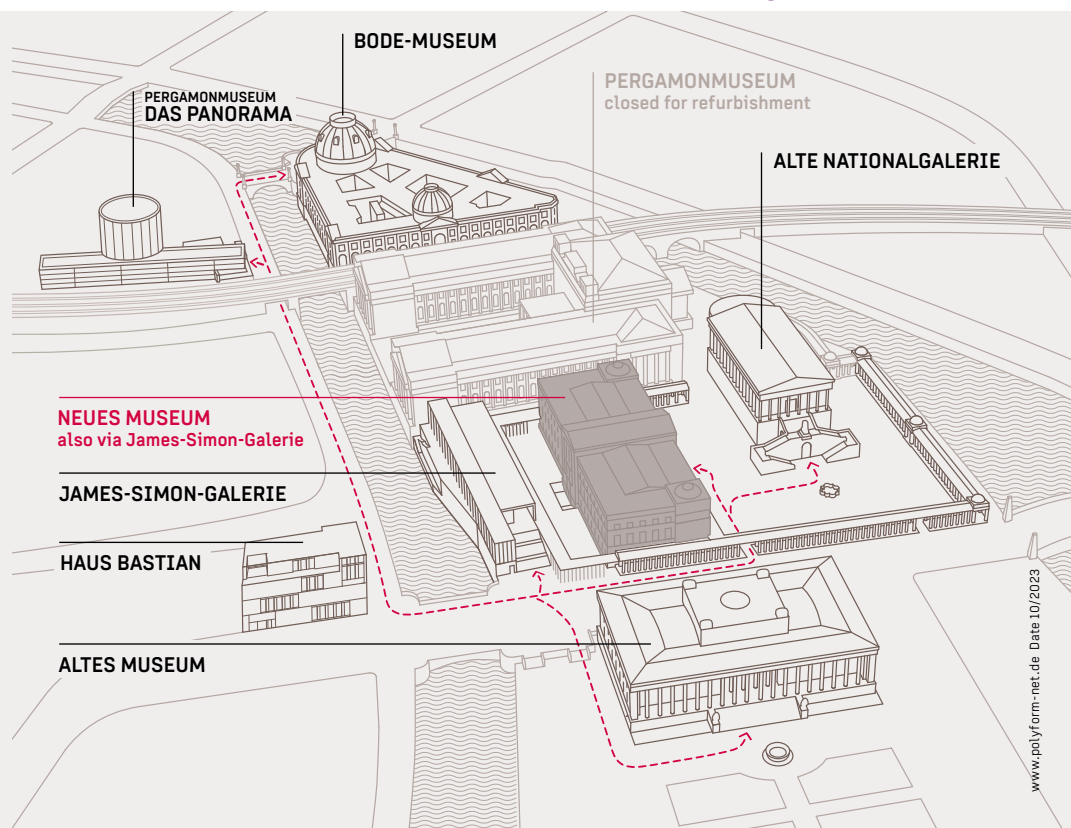
Please check the current opening hours at  
[www.smb.museum](http://www.smb.museum)  
Ticket price includes audioguides  
in several languages

No queuing for admission to any museums  
and exhibitions. Tickets available from  
[www.smb.museum/tickets](http://www.smb.museum/tickets)

#### Information, assistance, reservations

Monday - Friday 9 am - 4 pm  
Tel. 030 - 266 42 42 42  
[service@smb.museum](mailto:service@smb.museum)  
[www.smb.museum/nm](http://www.smb.museum/nm)

Subject to alterations



**unesco**

Museumsinsel  
(Museum Island), Berlin  
World Heritage since 1999