

Information and floor plans

BODE-MUSEUM

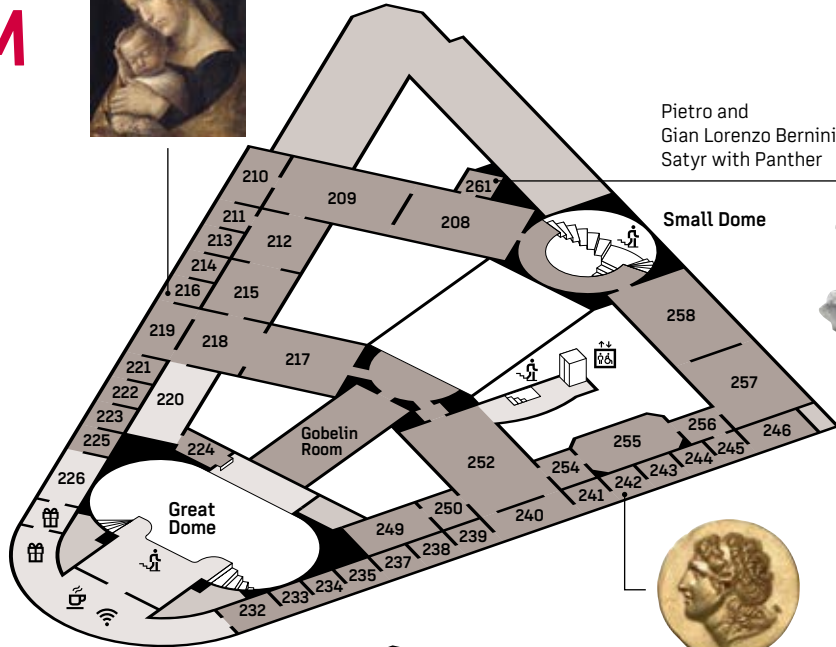
MUSEUMSINSEL BERLIN

2

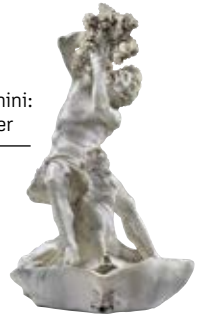
- 208-210 France and the Netherlands - Late Gothic
- 211 Alabaster Objects
- 216 James Simon Cabinet
- 212-219 | 221 | 222 | 223 | 225 Germany and the Netherlands - Renaissance, Baroque
- 224 Italy - Renaissance and Historicism
- 232 The Making of Sculpture
- 233 Merseburg Mirror Cabinet
- 234 | 235 | 237-240 Italy - Small Bronzes
- 241 | 242-246 Coins and Medals
- 249 | 250 Spain
- 252 | 254-256 Germany and Austria - Baroque
- 257 | 258 | Small Dome Germany and France - Classicism
- 261 Tiepolo-Cabinet



Andrea Mantegna:
Madonna with
Sleeping Child



Pietro and
Gian Lorenzo Bernini:
Satyr with Panther



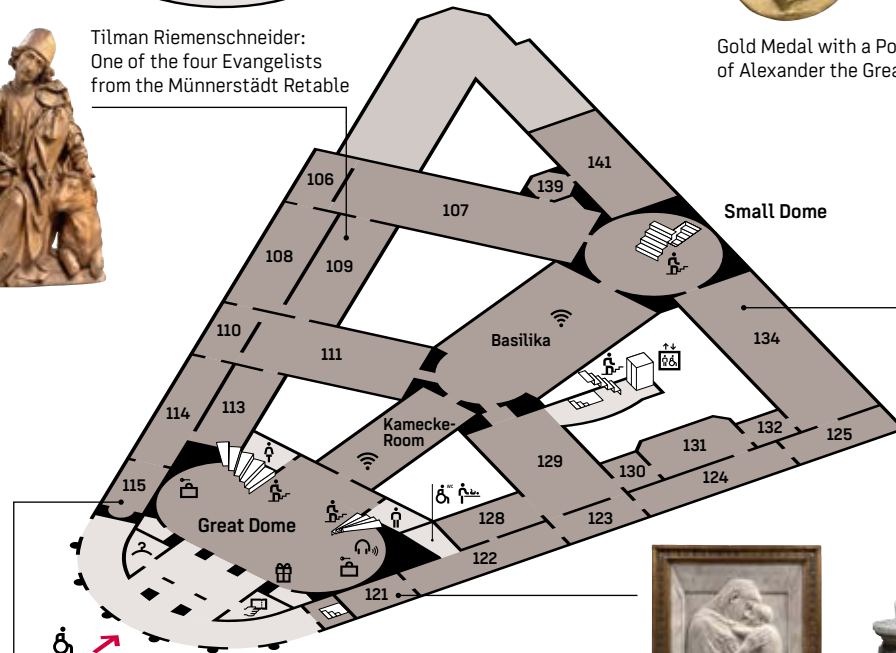
Gold Medal with a Portrait
of Alexander the Great

1

- 106 | 107 | 109 Germany - Late Gothic
- 108 Italy - Gothic
- 110 | 113-115 Late Antiquity and Byzantium
- 111 Germany and France - Gothic
- 121-125 | 128 | 129-132 | 134 | Basilika Italy - Renaissance, Baroque
- 139 Medieval Treasury
- 141 Gröningen Tribune
- Central and Southern Europe - Romanesque



Tilman Riemenschneider:
One of the four Evangelists
from the Münnerstädt Retable



Entrance



Donatello:
Pazzi Madonna



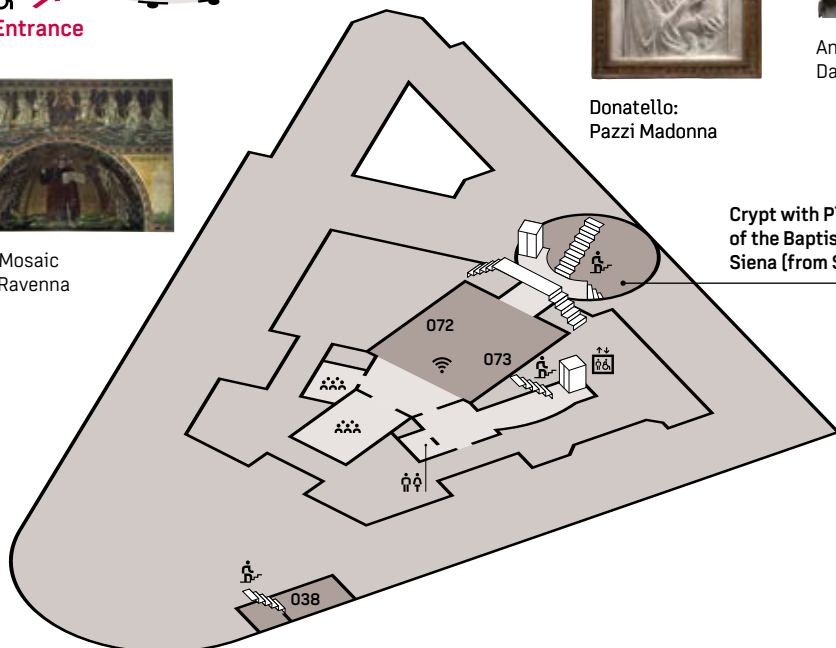
Antonio Canova:
Dancer

0

- 072 | 073 Exhibition "Klartext" [Plain Talk]
- 038 Study room and Library [Entrance]
- Numismatic collection



Apse Mosaic
from Ravenna



Crypt with Plaster Cast
of the Baptismal Font of
Siena (from Spring 2024)

For exhibitions that are integrated in the permanent collection please see separate floor plans.



The Bode-Museum

The Kaiser-Friedrich-Museum [later Bode-Museum] was built at the tip of the Museumsinsel between 1897 and 1904. To create the impression of a museum rising from the water, architect Ernst Eberhard von Ihne's three-wing building hugs the bank of the island on two sides. The plans were largely the work of Wilhelm von Bode, at the time Director of the Gemäldegalerie [Gallery of Old Masters] and Skulpturensammlung [Sculpture Collection] and later Director General of the Royal Museums in Berlin. When it opened in 1904 the Kaiser-Friedrich-Museum was the first museum to display painting and sculpture on an equal footing. The building was severely damaged during the Second World War and reconstructed in stages from 1948 to 1986. In 1956 the museum was renamed in memory of its spiritual founder. Following the fall of the Wall and the reuniting of the Staatliche Museen zu Berlin [National Museums in Berlin] the museum was fully overhauled to reflect the needs of a modern museum and comply with requirements relating to the preservation of monuments.

The collections

The Bode-Museum accommodates a number of collections. Besides from the Skulpturensammlung und Museum für Byzantinische Kunst [Sculpture Collection and Museum of Byzantine Art] and Münzkabinett [Numismatic Collection] the museum also contains European sculptures and paintings from the Gemäldegalerie, now located at the Kulturforum. The Skulpturensammlung is one of the largest collections of sculpture in existence, encompassing works dating from the early Middle Ages to the late 18th century. The quality of the collection is reflected in works by such masters as Donatello, Tilman Riemenschneider and Antonio Canova. The Museum für Byzantinische Kunst contains a world-class collection of Late Antique and Byzantine art stretching from the 3rd to the 15th century. Encompassing to over half a million objects, the Münzkabinett ranks as one of the world's most important coin collections. The 4,000 coins and medallions exhibited in the Bode Museum chart the history of mankind from the beginnings of minting in the 7th century BC to the Euro of the present day.

Bode-Museum

Staatliche Museen zu Berlin
Museumsinsel Berlin
Visitor's entrance: Am Kupfergraben 1
(via Monbijoubücke)
10117 Berlin

Please check the current opening hours at
www.smb.museum

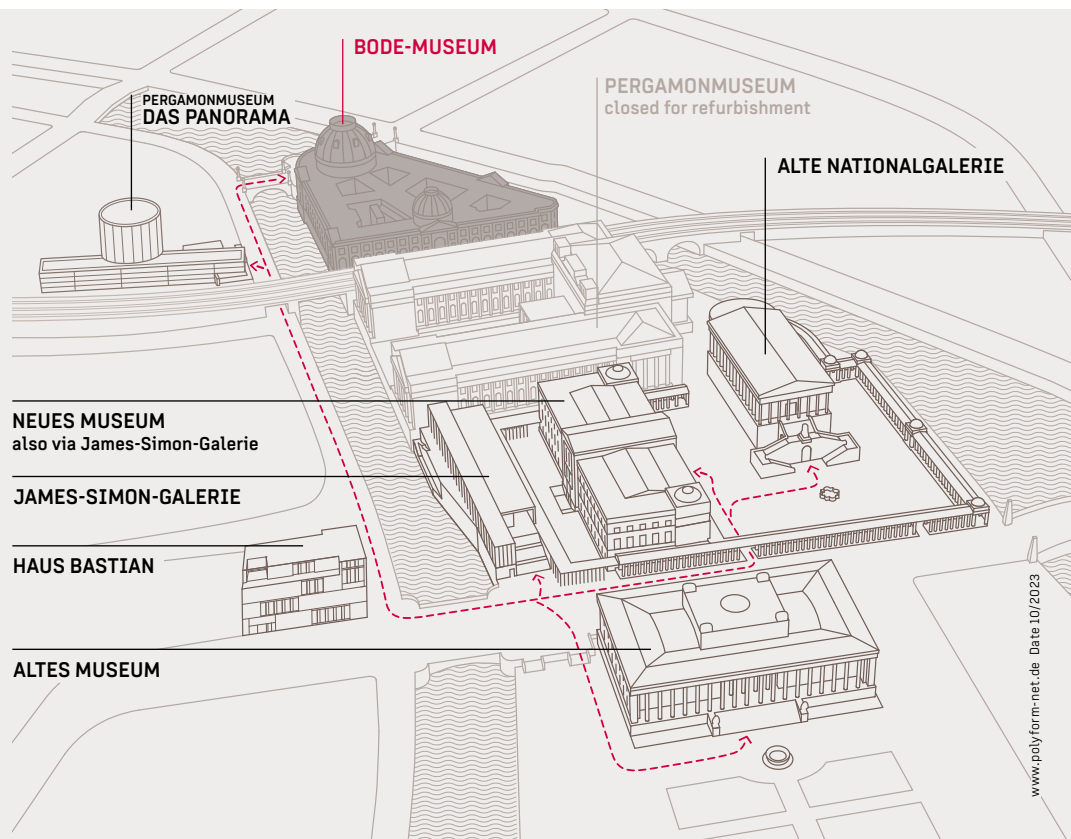
Ticket price includes audioguides in
German and English.

Avoid queuing for admission to any of the
museums or exhibitions: tickets available at
www.smb.museum/tickets

Information, advice, bookings

Monday - Friday 9 am - 4 pm
Tel. 030 - 266 42 42 42
service@smb.museum
www.smb.museum/bm

Subject to alterations



unesco

Museumsinsel
(Museum Island), Berlin
World Heritage since 1999