

Information and floor plans

ALTES MUSEUM

MUSEUMSINSEL BERLIN

2

Etruscan and Roman Art

- 1 The Etruscans – Rise of a Civilisation
- 2 Etruria – Cities, Sanctuaries, Cemeteries
- 3 Life and Death in Rome
- 4 Roman Sculpture and Greek Model
- 5 Roman Villas – Luxury as a Lifestyle
- 6 The Garden of Delights – The Art of Love in Antiquity
- 7 Rome – Faces of the Empire
- 8 Special exhibitions



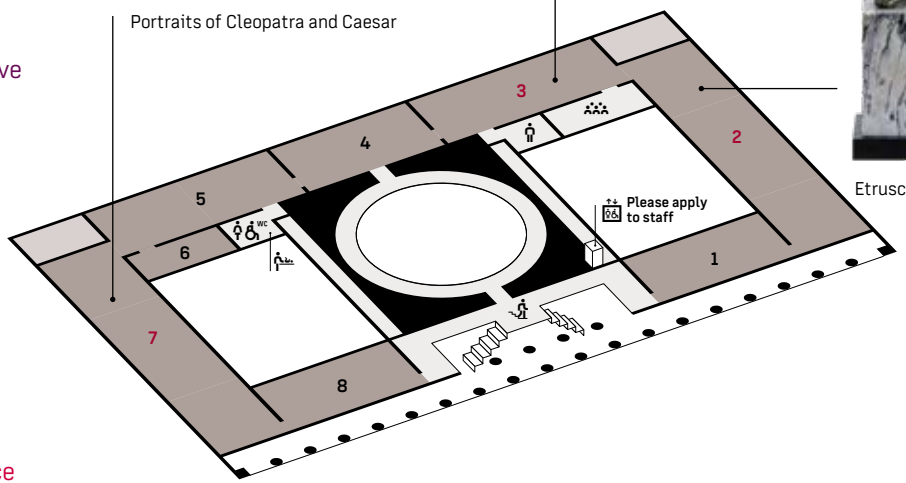
Portraits of Cleopatra and Caesar



Knucklebone Player



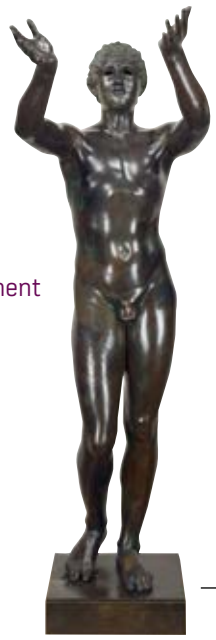
Etruscan Warrior



1

Greek Art

- 1 Age of Heroes – Early Greece
- 2 Places of the Gods – Sanctuaries in Archaic Greece
- 3 Memory and Representation – Funerary Monuments in Archaic Greece
- 4 The Ancient Coin – Work of Art, Money and Historical Testimony [temporarily closed]
- 5 Gods and Heroes – Images from Greek Mythology
- 6 Masterpieces – The Human Image in the Greek Classical Period
- 7 Life and Death in Classical Athens – Everyday Life in an Ancient Metropolis
- 8 Ancient Jewellery – Treasures from Four Millennia [temporarily closed]
- 9 The Greek Theatre – Cult und Entertainment
- 10 The Western Greeks – Southern Italy and Sicily
- 11 Alexander and the Outcome – The Age of Hellenism
- 12 350 Years of the Collection of Classical Antiquities



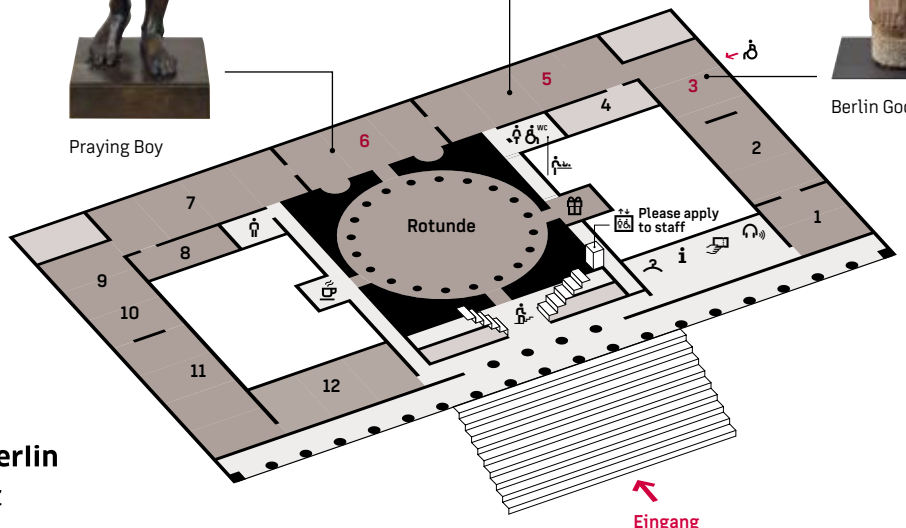
Praying Boy



Drinking Cup of the Potter Sosias



Berlin Goddess



- ➔ Entrance
- 🎫 Tickets
- ℹ Information
- 🎧 Audio guide
- 🚪 Cloakroom
- 🛍 Shop

- ♿ Barrier-free access
- ☕ Café
- 🚻 Toilets
- ♿ Accessible toilet
- 🛏 Changing table
- 🎨 Studio



Staatliche Museen zu Berlin
Preußischer Kulturbesitz



The Altes Museum (Old Museum)

Karl Friedrich Schinkel's Altes Museum, created from 1823 to 1830, is among the most important examples of Neoclassical architecture. The wide atrium with 18 Ionic columns is reminiscent of Greek temple architecture. The inscription above the portico reads: "Friedrich Wilhelm III founded this museum in 1828 for the study of all antiquities and the free arts". After striding through the atrium the central cupola room inside is surprising: it is the rotunda adorned with antique statues of gods. It is inspired by the Pantheon in Rome. The light cascading through the skylight gives the room a special atmosphere.

Today the museum houses the Antikensammlung [Collection of Classical Antiquities], which features its permanent exhibition on the art and culture of the Greeks, Etruscans and Romans. The Münzkabinett [Numismatic Collection] completes this overall view of classical antiquity with its ancient objects [temporarily closed].

Exhibitions

The main floor provides a chronological tour through the art of ancient Greece from the 10th up to the 1st century BC. Stone sculptures, vases and statuettes made of bronze and clay are exhibited in thematic references. Highlights are the statue of the "Berlin Goddess" with the original colour coat, the "Praying Boy" or the Cup of the potter Sosias. Carved stones as well as precious jewellery works made of gold and silver complement the presentation.

On the upper floor, the art and culture of the Etruscans and the Roman Imperial Period is on display. The Etruscan Collection is one of the largest outside Italy. It includes rare works such as grave goods from the warrior grave of Tarquinia and the clay tile from Capua. In addition to statues and sarcophagi, the collection of Roman art presents the Hildesheim Silver Treasure, mummy portraits and the famous portrait busts of Caesar and Cleopatra. Ancient erotic art is exhibited in the "Garden of Delights".

Altes Museum

Staatliche Museen zu Berlin
Museumsinsel Berlin
Visitor's entrance: Am Lustgarten
10178 Berlin

Please check the current opening hours at
www.smb.museum

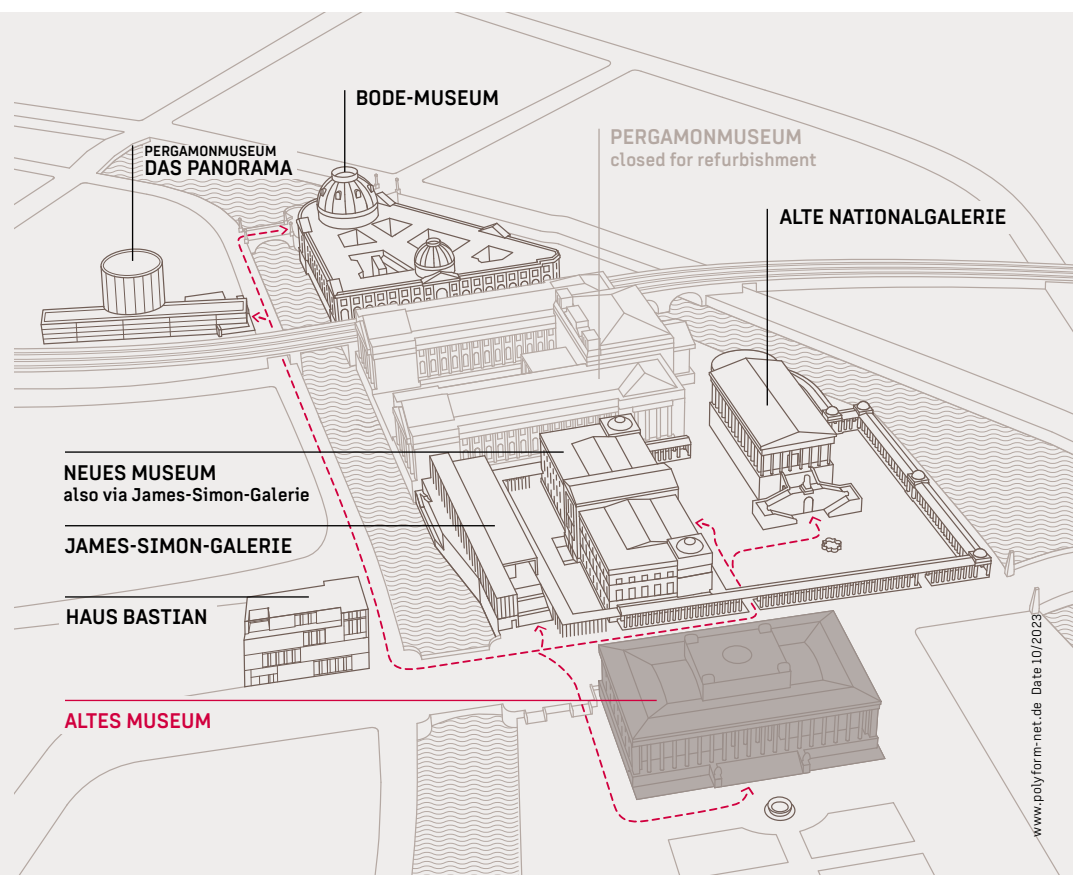
Ticket price includes audioguides in
German and English

No queuing for admission to any museums
and exhibitions. Tickets available at
www.smb.museum/tickets

Information, assistance, reservations

Monday - Friday 9 am - 4 pm
Tel. 030 - 266 42 42 42
service@smb.museum
www.smb.museum/am

Subject to alterations



unesco

Museumsinsel
(Museum Island), Berlin
World Heritage since 1999